



NORTH AMERICAN SUBBASIN Groundwater Sustainability Plan

PREPARED FOR:

RD1001 GSA

Sacramento Groundwater Authority GSA

South Sutter Water District GSA

Sutter County GSA

West Placer County GSA

DECEMBER 2021

This page left intentionally blank

North American Subbasin Groundwater Sustainability Plan

Prepared for:

Sacramento Groundwater Authority GSA
Reclamation District 1001 GSA
South Sutter Water District GSA
Sutter County GSA
West Placer GSA

Prepared by:

GEI Consultants
2868 Prospect Park Drive, Suite 400
Sacramento, CA 95670

December 2021

This page left intentionally blank

Table of Contents

Table of Contents	i
Acronyms and Abbreviations	x
Executive Summary	1
1. Introduction	1-1
2. Agency Information	2-1
2.1 GSA Organization and Management Structure	2-1
2.1.1 Sacramento Groundwater Authority GSA	2-1
2.1.2 RD 1001 GSA	2-3
2.1.3 South Sutter Water District GSA	2-3
2.1.4 Sutter County GSA	2-3
2.1.5 West Placer GSA	2-3
2.2 Plan Manager Contact Information	2-4
2.3 Implementation Authority	2-4
3. Description of Plan Area	3-1
3.1 GSP Plan Area	3-1
3.2 Adjudicated Areas	3-1
3.3 Jurisdictional Areas	3-3
3.3.1 Federal	3-3
3.3.2 State of California	3-3
3.3.3 California Native American Tribes	3-4
3.3.4 County	3-6
3.3.5 City	3-6
3.3.6 Water Agencies	3-6
3.3.7 Small Community Water Systems	3-7
3.3.8 Agricultural Water Providers	3-9
3.3.9 Reclamation Districts	3-9
3.4 Land Use Designations	3-9
3.5 Habitat Preserves and Easements	3-14
3.6 Disadvantaged Communities	3-14
3.7 Water Use Sectors	3-17
3.7.1 Urban	3-17
3.7.2 Domestic	3-17
3.7.3 Agriculture	3-17
3.7.4 Environmental	3-19
3.7.5 Groundwater Remediation	3-19
3.8 Water Source Types	3-21
3.8.1 Groundwater	3-21
3.8.2 Surface Water Sources	3-23
3.8.3 Recycled Water	3-24
3.8.4 Water Reuse	3-28
3.9 Density of Wells	3-28
3.10 Existing Water Resources Management Plans	3-32
3.10.1 Groundwater Management Plans	3-32
3.10.2 Water Forum Agreement	3-32
3.10.3 American River Basin Integrated Regional Water Management Plan	3-33

3.10.4	North Sacramento Valley Integrated Regional Water Management Plan	3-33
3.10.5	Urban Water Management Plans	3-34
3.10.6	Urban Water Use Efficiency Program	3-34
3.10.7	Agricultural Water Management Plans	3-35
3.10.8	Salt/Nutrient Management Plan	3-36
3.10.9	Water Quality Control Plan for the Sacramento River Basin	3-36
3.11	Existing Water Resources Monitoring Programs	3-37
3.11.1	Groundwater Level Monitoring Programs and Networks	3-37
3.11.2	Groundwater Quality Monitoring Programs and Network	3-40
3.11.3	Surface Water Monitoring Networks	3-42
3.11.4	Precipitation Monitoring Network	3-42
3.11.5	Subsidence Monitoring Network	3-44
3.12	Limits to Operational Flexibility	3-46
3.13	Conjunctive Use Programs	3-46
3.14	Land Use Plans	3-47
3.15	GSP Implementation Effects on Land Use	3-48
3.16	GSP Implementation Effects on Water Supply	3-48
3.16.1	Urban Water Supply	3-49
3.16.2	Agricultural Water Supply	3-49
3.16.3	Domestic Water Supply	3-49
3.16.4	Environmental Water Supply	3-49
3.17	Well Permitting	3-49
3.18	Land Use Plans Outside of the NASb	3-51
4.	Hydrogeologic Setting	4-1
4.1	Basin Boundaries	4-1
4.2	Topography	4-3
4.3	Surface Water Bodies	4-3
4.4	Soils	4-5
4.5	Regional Geology	4-8
4.6	Geologic Structure	4-8
4.7	Fresh Water-Bearing Formations	4-9
4.7.1	Quaternary Alluvium	4-9
4.7.2	Modesto and Riverbank Formations	4-11
4.7.3	Turlock Lake and Laguna Formations	4-11
4.7.4	Mehrten Formation	4-11
4.8	Non-Water or Non-Fresh Water Bearing Formations	4-12
4.8.1	Valley Springs Formation	4-12
4.8.2	Ione Formation	4-12
4.8.3	Central Valley Formation	4-13
4.8.4	Basement Rocks	4-15
4.9	Regional Geologic Sections	4-15
4.9.1	Section A-A'	4-18
4.9.2	Section B-B'	4-21
4.9.3	Section C-C'	4-25
4.9.4	Geotechnical Investigations Sections	4-29
4.10	General Water Quality	4-31
4.11	Principal Aquifers	4-35
4.12	Groundwater Recharge and Discharge Areas	4-36
4.12.1	Recharge Areas Inside of the Subbasin	4-36
4.12.2	Recharge Areas Outside of the Subbasin	4-37
4.12.3	Groundwater Discharge Areas	4-37
4.13	Imported Water Supplies	4-39
4.14	Data Gaps	4-39
5.	Groundwater Conditions	5-1

5.1	General	5-1
5.2	Groundwater Levels	5-2
5.2.1	Western Area	5-3
5.2.2	Central Area	5-9
5.2.3	Eastern Area	5-9
5.3	Historic Groundwater Contours	5-10
5.4	Current Groundwater Contours	5-17
5.5	Hydraulic Gradients Between Aquifers	5-20
5.6	Hydraulic Gradients Between Fresh and Non-Fresh Water Formations	5-22
5.7	Change in Groundwater Storage	5-22
5.8	Groundwater Quality	5-24
5.8.1	Occurrence of Commonly Evaluated Constituents in Groundwater	5-24
5.8.2	Groundwater Quality Trends	5-35
5.8.3	Groundwater Contamination Sites and Plumes	5-45
5.9	Seawater Intrusion	5-47
5.10	Land Subsidence	5-48
5.11	Interconnected Surface Water	5-57
5.12	Groundwater-Dependent Ecosystems	5-61
5.13	Data Gaps	5-65
6.	Water Budgets	6-1
6.1	Water Budget Information	6-1
6.2	Identification of Hydrologic Periods	6-2
6.3	Usage of the CoSANA Model and Associated Data in Water Budget Development	6-4
6.4	Water Budget Definitions and Assumptions	6-4
6.4.1	Historical Water Budget	6-5
6.4.2	Current Water Budget	6-5
6.4.3	Projected Water Budget	6-6
6.4.4	Water Budget Estimates	6-7
6.5	Historical Water Budget	6-15
6.6	Current Water Budget	6-19
6.7	Projected Water Budget	6-22
6.8	Projected Water Budget with Climate Change	6-26
6.9	Sustainable Yield Estimate	6-29
7.	Monitoring Networks	7-1
7.1	Objectives	7-1
7.2	Monitoring Network	7-2
7.3	Representative Monitoring Network	7-8
7.4	Chronic Lowering of Groundwater Levels	7-13
7.4.1	GDE Representative Monitoring Network	7-13
7.4.2	Domestic Well Representative Monitoring Network	7-14
7.4.3	Groundwater Only Area Representative Monitoring Network	7-14
7.4.4	Groundwater Level Monitoring Frequency	7-21
7.4.5	Groundwater Level Monitoring Spatial Density	7-22
7.4.6	Data Gaps	7-22
7.5	Reduction in Groundwater Storage	7-22
7.6	Seawater Intrusion	7-23
7.7	Groundwater Quality	7-23
7.7.1	Monitoring Network	7-24
7.7.2	Representative Monitoring Wells	7-27
7.7.3	Groundwater Quality Monitoring Frequency	7-31
7.7.4	Groundwater Quality Monitoring Spatial Density	7-31
7.7.5	Data Gaps	7-32
7.8	Land Subsidence	7-32
7.8.1	Land Subsidence Monitoring Network	7-32

7.8.2	Representative Monitoring Locations	7-32
7.8.3	Land Subsidence Monitoring Frequency	7-36
7.8.4	Land Subsidence Monitoring Spatial Density	7-36
7.8.5	Data Gaps	7-37
7.9	Surface Water Depletion	7-37
7.9.1	Monitoring Network	7-37
7.9.2	Surface Water Representative Monitoring Locations	7-37
7.9.3	Monitoring Frequency	7-42
7.10	Groundwater Well Monitoring Spatial Density	7-42
7.10.1	Data Gaps	7-42
7.11	Monitoring Protocols	7-42
7.11.1	Groundwater Levels	7-42
7.11.2	Water Quality	7-45
7.12	Data Reporting	7-47
7.13	Monitoring Network Improvements	7-47
8.	Sustainable Management Criteria	8-1
8.1	Sustainability Goal	8-1
8.1.1	Supporting Sustainability Goal Information	8-2
8.2	Process of Developing SMC	8-4
8.3	Sustainability Indicators	8-8
8.3.1	NASb SMC Approach - Sustainability Indicator Grouping	8-8
8.4	Sustainability Indicator #1 - Chronic Lowering of Groundwater Levels	8-9
8.4.1	Undesirable Results – Chronic Lowering of Groundwater Levels	8-9
8.4.2	Minimum Thresholds - Chronic Lowering of Groundwater Levels	8-11
8.4.3	Measurable Objectives – Chronic Lowering of Groundwater Levels	8-21
8.5	Sustainability Indicator #2 - Reduction of Storage	8-24
8.5.1	Undesirable Results – Reduction of Storage	8-25
8.5.2	Minimum Thresholds – Reduction of Storage	8-25
8.5.3	Measurable Objectives – Reduction of Storage	8-26
8.6	Sustainability Indicator #3 - Seawater Intrusion	8-26
8.7	Sustainability Indicator #4 - Degraded Water Quality	8-26
8.7.2	Minimum Thresholds – Degraded Water Quality	8-29
8.7.3	Measurable Objectives – Degraded Water Quality	8-32
8.8	Sustainability Indicator #5 - Land Subsidence	8-34
8.8.1	Undesirable Results – Land Subsidence	8-34
8.8.2	Minimum Thresholds – Land Subsidence	8-35
8.8.3	Measurable Objectives – Land Subsidence	8-39
8.9	Sustainability Indicator #6 - Depletion of Surface Water	8-39
8.9.1	Undesirable Results – Depletion of Surface Water	8-43
8.9.2	Minimum Thresholds – Depletion of Surface Water	8-44
8.9.3	Measurable Objectives – Depletion of Surface Water	8-47
9.	Projects and Management Actions	9-1
9.1	Current Groundwater Management Activities	9-1
9.2	Projects and Management Actions	9-2
9.2.1	Project #1 - Regional Conjunctive Use Expansion – Phase 1	9-2
9.2.2	Project #2 - Natomas Cross Canal Stability Berm and Channel Habitat Enhancements Project	9-7
9.2.3	Management Action #1 - Complete Planning for Sacramento Regional Water Bank	9-10
9.2.4	Management Action #2 - Explore Improvements with NASb Well Permitting Programs	9-12
9.2.5	Management Action #3 - Proactive Coordination with Land Use Agencies	9-13
9.2.6	Management Action #4 - Domestic/Shallow Well – Data Collection and Communication Program	9-15

9.2.7	Management Action #5 - GDE Assessment Program	9-16
9.3	Supplemental Projects	9-17
10.	Plan Implementation	10-1
10.1	Plan Implementation Staffing	10-1
10.2	Implementation Costs and Funding	10-1
10.3	Implementation Activities	10-2
11.	Notice and Communications	11-1
11.1	Public Engagement and Active Involvement	11-1
11.2	Groundwater Beneficial Uses and Users	11-2
11.2.1	Agriculture	11-3
11.2.2	Non-municipal Domestic Well Users	11-6
11.2.3	Small Water Systems	11-7
11.2.4	Environmental Users of Groundwater	11-7
11.2.5	Disadvantaged Communities	11-8
11.2.6	Tribes	11-9
11.3	List of Public Meetings	11-9
11.3.1	Draft GSP	11-10
11.3.2	GSP Hearings and Adoption	11-11
11.4	GSP Comments and Responses	11-11
11.5	Interbasin Communications and Agreements	11-13
11.6	GSAs Decision Making Process	11-14
11.6.1	GSA Formation	11-15
11.6.2	GSP Initial Notification	11-15
11.6.3	GSP Adoption and Submittal to DWR	11-15
11.6.4	GSP Review and Evaluation	11-16
11.6.5	GSP Implementation MOA	11-16
11.7	Informing the Public During GSP Implementation	11-16
12.	References	12-1

List of Figures

Figure ES-1.	North American Subbasin, GSAs and Adjacent Subbasins	2
Figure ES-2.	Water Use Sectors	4
Figure ES-3.	Geologic Section	5
Figure 1-1.	North American Subbasin	1-3
Figure 2-1.	GSP Plan Area and GSAs	2-2
Figure 3-1.	Area Covered by GSP	3-2
Figure 3-2.	City, County, State, and Federal Jurisdictional Areas and Lands.	3-5
Figure 3-3.	Water Districts and Systems Areas	3-8
Figure 3-4.	Reclamation Districts Jurisdictional Areas	3-10
Figure 3-5.	Existing Land Use Designations	3-12
Figure 3-6.	Planned Development Areas and Planned Water Source Types	3-13
Figure 3-7.	Habitat Conservation Preserves and Easements	3-15
Figure 3-8.	Disadvantaged and Severely Disadvantaged Communities	3-16
Figure 3-9.	Water Use Sectors	3-18
Figure 3-10.	Natural Communities Commonly Associated with Groundwater	3-20
Figure 3-11.	Water Source Types	3-22
Figure 3-12.	Wastewater Treatment Plants	3-27
Figure 3-13.	Density of Domestic Wells Per Square Mile	3-29
Figure 3-14.	Density of Production Wells Per Square Mile	3-30
Figure 3-15.	Density of Municipal Wells Per Square Mile	3-31
Figure 3-16.	Groundwater Level Monitoring Network	3-39
Figure 3-17.	Groundwater Quality Monitoring Network	3-41

Figure 3-18. River Gages and Precipitation Stations	3-43
Figure 3-20. Subsidence Monitoring Network	3-45
Figure 4-1. Base of Fresh Water	4-2
Figure 4-2. Topography	4-4
Figure 4-3. Hydrologic Soils Classification	4-6
Figure 4-4. SAGBI Soils	4-7
Figure 4-5. Surface Geology	4-10
Figure 4-6. Natural Gas Wells	4-14
Figure 4-7. Geologic Section Locations	4-16
Figure 4-8. Stream Channel Deposits	4-17
Figure 4-9. Geologic Section A-A'	4-19
Figure 4-10. Geologic Section B-B'	4-23
Figure 4-11. Geologic Section C-C'	4-27
Figure 4-12. Detailed Geologic Sections - Slurry Cut Off Walls	4-30
Figure 4-13. General Water Quality Types and Distribution	4-32
Figure 4-14. General Water Quality Types	4-33
Figure 4-15. Recharge and Discharge Areas	4-38
Figure 5-1. Groundwater Level Monitoring Wells	5-4
Figure 5-2. Depth to Groundwater – Spring 2019	5-5
Figure 5-3. Representative Groundwater Level Hydrographs	5-7
Figure 5-4. Groundwater Contours – Early 1900s	5-13
Figure 5-5. Groundwater Contours – 1970 through 2004	5-15
Figure 5-6. Groundwater Contours – Spring 2019	5-18
Figure 5-7. Groundwater Contours – Fall 2019	5-19
Figure 5-8. Vertical Gradients Upper to Lower Portions of the Aquifer – Fall 2019	5-21
Figure 5-9. Annual and Cumulative Change in Storage	5-23
Figure 5-10. Distribution of TDS Concentrations	5-26
Figure 5-11. Distribution of Nitrate as Nitrogen Concentrations	5-27
Figure 5-12. Distribution of Arsenic Concentrations	5-28
Figure 5-13. Distribution of Boron Concentrations	5-29
Figure 5-14. Distribution of Iron Concentrations	5-30
Figure 5-15. Distribution of Manganese Concentrations	5-31
Figure 5-16. Distribution of Hexavalent Chromium Concentrations	5-32
Figure 5-17. TDS Trends	5-38
Figure 5-18. Nitrate as Nitrogen Trends	5-39
Figure 5-19. Arsenic Trends	5-40
Figure 5-20. Boron Trends	5-41
Figure 5-21. Iron Trends	5-42
Figure 5-22. Manganese Trend	5-43
Figure 5-23. Hexavalent Chromium Trend	5-44
Figure 5-24. Groundwater Contamination Sites and Plumes	5-46
Figure 5-25. Land Subsidence and Groundwater Level Decline Correlation	5-51
Figure 5-26. Extensometer versus Groundwater Levels	5-52
Figure 5-27. CGPS Station LCN1 versus Groundwater Levels	5-53
Figure 5-28. CGPS Station LCN2 versus Groundwater Levels	5-54
Figure 5-29. Benchmark Differences 2008-2017 (in Feet)	5-55
Figure 5-30. InSAR Subsidence 2015-2020 (in Feet)	5-56
Figure 5-31. Interconnected Surface Water	5-59
Figure 5-32. Likely Groundwater Dependent Ecosystems	5-62
Figure 5-33. Rankings of Likely and Less Likely GDE Areas	5-63
Figure 5-34. Occurrence of Quercus Lobata (Valley Oak)	5-64
Figure 6-1. Generalized Water Budget Diagram	6-2
Figure 6-2. 50-Year Historical Precipitation and Cumulative Departure from Mean Precipitation in the North American Groundwater Basin	6-3
Figure 6-3. Historical Average Annual Water Budget – Stream and Canal Systems, North American Subbasin	6-16

Figure 6-4. Historical Average Annual Water Budget – Land Surface System, North American Subbasin	6-17
Figure 6-5. Historical Average Annual Water Budget – Groundwater System, North American Subbasin	6-18
Figure 6-6. Average Annual Current Water Budget – Stream and Canal Systems, North American Subbasin	6-20
Figure 6-7. Average Annual Current Water Budget – Land Surface System, North American Subbasin	6-21
Figure 6-8. Average Annual Current Water Budget – Groundwater System, North American Subbasin	6-22
Figure 6-9. Average Annual Projected Water Budget – Stream and Canal Systems, North American Subbasin	6-23
Figure 6-10. Average Annual Projected Water Budget – Land Surface System, North American Subbasin	6-24
Figure 6-11. Average Annual Projected Water Budget – Groundwater System, North American Subbasin	6-26
Figure 6-12. Average Annual Projected with Climate Change Water Budget – Stream and Canal Systems, North American Subbasin	6-27
Figure 6-13. Average Annual Projected with Climate Change Water Budget – Land Surface System, North American Subbasin	6-28
Figure 6-14. Average Annual Projected with Climate Change Water Budget – Groundwater System, North American Subbasin	6-29
Figure 7-1. Groundwater Level Monitoring Network Wells	7-4
Figure 7-2. Representative Groundwater Level Monitoring Wells	7-9
Figure 7-3. Representative Groundwater Level Monitoring Wells for GDEs	7-15
Figure 7-4. Representative Monitoring Wells Selection for Domestic Wells	7-16
Figure 7-5. Depth to Domestic Well Top of Screens and Representative Monitoring Wells	7-17
Figure 7-6. Comparison of Domestic Well Minimum Depths to Agricultural and Municipal Well Depths	7-18
Figure 7-7. Representative Monitoring Wells for Areas Solely Dependent on Groundwater	7-19
Figure 7-8. Representative Monitoring Wells for Chronic Lowering of Groundwater	7-20
Figure 7-9. Sentry Monitoring Well Network	7-26
Figure 7-10. Shallow Aquifer Water Quality Representative Monitoring Wells	7-29
Figure 7-11. Deep Aquifer Groundwater Quality Representative Monitoring Network	7-30
Figure 7-12. Land Subsidence Monitoring Network	7-34
Figure 7-13. Land Subsidence Representative Monitoring Network	7-35
Figure 7-14. Surface Water Depletion Monitoring Network	7-39
Figure 8-1. Processing of Sustainability Indicators	8-3
Figure 8-2. Depiction of Key SGMA Compliance Elements	8-5
Figure 8-3. NASb Applicable Sustainability Indicators	8-6
Figure 8-4. MO and MT Relationship	8-7
Figure 8-5. Projected Groundwater Elevation Changes at RMS Locations	8-13
Figure 8-6. Projected Groundwater Elevation MTs at RMS Locations	8-16
Figure 8-7. Projected Groundwater Elevation MOs at RMS Locations	8-22
Figure 8-7. Projected Long-Term Average Annual Water Budget Change along the Sacramento River	8-41
Figure 9-1. Groundwater Level Hydrographs, PMA Scenario and Associated Baselines	9-6
Figure 9-2. Cumulative Storage Change for the PMA Scenarios and Associated Baselines	9-7

List of Tables

Table ES-1. Estimated Groundwater Change in Storage	7
Table ES-2. NASb Undesirable Results	9
Table 3-1. Land Use Summary	3-11
Table 3-2. Well Type Summary	3-21
Table 3-4. Water Supply Sources	3-26
Table 3-5. Groundwater Management Plans	3-32
Table 4-1. Criteria Evaluated for Two Principal Aquifers	4-36
Table 5-1. Groundwater Gradients Toward the Central Area	5-17

Table 5-2. Summary of Annual Extraction and Change in Storage	5-23
Table 5-3. General Water Quality Summary	5-33
Table 5-4. Water Quality Trend Summary	5-37
Table 6-1. Current Water Budget Conditions Summary	6-6
Table 6-2. Projected Water Budget Conditions Summary	6-6
Table 6-3. Summary of Groundwater Budget Assumptions	6-7
Table 6-4. Average Annual Water Budget – American River (AFY)	6-10
Table 6-5. Average Annual Water Budget – Bear River (AFY)	6-10
Table 6-6. Average Annual Water Budget – Sacramento River (AFY)	6-11
Table 6-7. Average Annual Water Budget – Feather River (AFY)	6-11
Table 6-8. Average Annual Water Budget – Composite of All Major Rivers (AFY)	6-12
Table 6-9. Total Inflows to the Subbasin	6-12
Table 6-10. Average Annual Water Budget – Land Surface System, North American Subbasin (AFY)	6-13
Table 6-11. Average Annual Water Budget – Groundwater System, North American Subbasin (AFY)	6-14
Table 6-12. Average Annual Values for Key Components of Water Budget by Year Type (AFY)	6-19
Table 7-1. Summary of Groundwater Level Well Types	7-3
Table 7-2. Groundwater Level Monitoring Well Types and Distribution	7-5
Table 7-3. Representative Groundwater Level Monitoring Wells	7-11
Table 7-4. Sentry Monitoring Wells	7-25
Table 7-5. Shallow Aquifer Water Quality Representative Monitoring Wells	7-28
Table 7-6. Land Subsidence Representative Monitoring Wells	7-36
Table 7-7. Surface Water Gaging Stations	7-40
Table 7-8. Paired Monitoring Wells and Gages for Gradients	7-41
Table 8-1. Chronic Lowering of Groundwater Level Minimum Thresholds	8-15
Table 8-2. Groundwater Flow with Neighboring Subbasins	8-19
Table 8-3. Chronic Lowering of Groundwater Level Measurable Objectives and Interim Milestones	8-23
Table 8-4. Projected Groundwater Change in Storage	8-24
Table 8-5. Measurable Objective (Public Supply Well – Average Nitrate and TDS Concentrations)	8-33
Table 8-6. Measurable Objective (Domestic/Self-supplied – RMS Nitrate and TDS Concentrations)	8-33
Table 8-7. Minimum Thresholds for Land Subsidence RMS	8-36
Table 8-8. Seepage Changes in Interconnected Surface Waters that Support Critical Aquatic Species	8-42
Table 8-9. MTs, MOs, and Interim Milestones for Depletion of Surface Water	8-45
Table 9-1. CoSANA Regional Conjunctive Use Scenario Specifications	9-5
Table 9-2. Supplemental Projects	9-18
Table 10-1. Five-year Budget and Funding Sources	10-2
Table 10-2. Summary of Implementation Actions	10-3
Table 11-1. Beneficial Uses and Users	11-5

List of Appendices

Appendix A:	Implementation MOA
Appendix B:	Domestic Well Assessment
Appendix C:	Monitoring Construction Details
Appendix D:	Geologic Section Well Logs
Appendix E:	Levee Geologic Sections
Appendix F:	Assessment of Assessment of Principal Aquifers
Appendix G:	Western Area Hydrographs
Appendix H:	Central Well Hydrographs
Appendix I:	Eastern Area Hydrographs
Appendix J:	Vertical Gradients
Appendix K:	Ione Well Hydrographs
Appendix L:	Summary of Water Quality Detections
Appendix M:	Water Quality Trend Analysis Results
Appendix N:	Surface Water Interactions
Appendix O:	GDE Analysis

Appendix P: Groundwater Model Documentation
Appendix Q: SMC Hydrographs
Appendix R: List of Public Meetings
Appendix S: Public Comments
Appendix T: Interbasin Coordination Communications

Acronyms and Abbreviations

Act (or SGMA)	Sustainable Groundwater Management Act
AB	Assembly Bill
AFB	Air Force Base
AF	acre-feet
AFY	acre-feet per year
APN	assessor parcel number
As	arsenic
ASR	Aquifer Storage and Recovery
AWMP	Agricultural Water Management Plan
Basin Plan	Water Quality Control Plan for the Sacramento River Basin and the San Joaquin River Basin
bgs	below ground surface
BMP	Best Management Practice
CASGEM	California Statewide Groundwater Elevation Monitoring
CCBL	Current Conditions Baseline
CCR	California Code of Regulations
CDEC	California Data Exchange Center
CEQA	California Environmental Quality Act
CFWID	Camp Far West Irrigation District
cfs	cubic feet per second
CGPS	continuous global positioning stations
CrVI	hexavalent chromium
CoSANA	Cosumnes-South American-North American groundwater model
CVP	Central Valley Project
CVRWQCB	Central Valley Regional Water Quality Control Board
DAC	Disadvantaged Community
DDW	Division of Drinking Water
DMS	data management system
DWR	California Department of Water Resources
EC	electrical conductivity
EPA	U.S. Environmental Protection Agency
ELAP	Environmental Laboratory Accreditation Program
Fe	iron
Ft	feet
GAMA	Groundwater Ambient Monitoring and Assessment
GDE	groundwater dependent ecosystem
GSA	Groundwater Sustainability Agency
GSP	Groundwater Sustainability Plan
ILRP	Irrigated Lands Regulatory Program
InSAR	interferometric synthetic aperture radar
IRWMP	Integrated Regional Water Management Program
JPA	Joint Powers Authority
MCL	Maximum Contaminant Level
mg/L	milligrams per liter
Mn	manganese
M&I	municipal and industrial
MO	measurable objective

MOA	Memorandum of Agreement
msl	mean sea level
MT	minimum threshold
MW	monitoring well
N	nitrogen
NASb or Subbasin	North American Subbasin
NAVD88	North American Vertical Datum of 1988
NAWQA	National Water-Quality Assessment Program
NBCHCP	Natomas Basin Conservancy Habitat Conservation Plan
NCC	Natomas Cross Canal
NCCAG	Natural Communities Commonly Associated with Groundwater
NDMA	N-Nitrosodimethylamine
NDVI	Normalized Difference Vegetation Index
NEPA	National Environmental Policy Act
NID	Nevada Irrigation District
NM	no measurement code
NULE	Non-Urban Levee Evaluation
NMWC	Natomas Mutual Water Company
NWIS	National Water Information System
OWHD	Omochumne-Hartnell Water District
PCBL	Projected Conditions Baseline
PCBL+CC	Projected Conditions Baseline with Climate Change
PCE	perchloroethylene
PCWA	Placer County Water Agency
PFAS	per- and poly-fluoroalkyl substances
Plan	Groundwater Sustainability Plan
PMA	Projects and Management Actions
PWS	public water system
RCIC	Regional Contamination Issues Committee
RD	Reclamation District
RD 1001	Reclamation District 1001
RP	reference point
RPWS	reference point to water surface
RMS	representative monitoring site
RWA	Regional Water Authority
RWRP	Regional Water Reliability Plan
SAFCA	Sacramento Area Flood Control Agency
SAFER	Safe and Affordable Fund for Equity and Resilience
SAGBI	Soil Agricultural Groundwater Banking Index
SASb	South American Subbasin
SB	Senate Bill
SB X7-7	Water Conservation Act of 2009
SCEHD	Sutter County Environmental Health Division
SCEMD	Sacramento County Environmental Management Department
SCWA	Sacramento County Water Agency
SDAC	Severely Disadvantaged Community
SGA	Sacramento Groundwater Authority
SGMA	Sustainable Groundwater Management Act
Sierra Nevada	Sierra Nevada Mountain range
SJWD	San Juan Water District
SMC	Sustainable Management Criteria

SMCL	Secondary Maximum Contaminant Level
SSWD	South Sutter Water District
State Water Board	California State Water Resources Control Board
Subbasin	North American Subbasin
SWRCB	State Water Resources Control Board
TCE	Trichloroethylene
TDS	total dissolved solids
TSS	Technical Support Services Program
U.S.	United States of America
UAIC	United Auburn Indian Community
USBR	United States Bureau of Reclamation
USGS	United States Geologic Survey
UWMP	Urban Water Management Plan
WAF	Water Accounting Framework
Water Code	California Water Code
WCR	well completion report
WD	Water District
WDR	Waste Discharge Requirements
WEP	Water Efficiency Program
WFA	Water Forum Agreement
WPGSA	West Placer Groundwater Sustainability Agency
WSCP	Water Shortage Contingency Plan
WWTP	wastewater treatment plant

Executive Summary

Overview

In 2014, the California Legislature passed the Sustainable Groundwater Management Act (SGMA), which became effective on January 1, 2015. SGMA requires local Groundwater Sustainability Agencies (GSAs) to develop Groundwater Sustainability Plans (GSPs) that, among other things, explain how the basin will be managed sustainably over a 20-year timeframe. SGMA provides authorities to support locally controlled sustainable management of groundwater – meaning in a way that does not produce undesirable results such as chronic lowering of groundwater levels, causing subsidence or degrading water quality.

The North American Subbasin (NASb or Subbasin) includes five GSAs that have worked cooperatively to develop this single GSP covering the 535 square-mile subbasin that includes portions of Placer, Sacramento, and Sutter counties. The GSAs include: Reclamation District 1001 (RD 1001) GSA; Sacramento Groundwater Authority (SGA) GSA; South Sutter Water District (SSWD) GSA; Sutter County GSA; and West Placer GSA.

SGMA requires certain information be included in every GSP. This includes, among other things, the subbasin setting, a hydrogeological conceptual model, a comprehensive water budget, a basin-wide monitoring network, sustainable management criteria, and projects and management actions necessary to ensure the Subbasin’s sustainability. A summary of each of the primary NASb GSP sections is provided below.

ES 1 – Introduction

SGMA effectively prescribes four basic steps to the management process: 1) form a GSA; 2) develop and adopt a GSP; 3) implement the GSP to achieve a sustainability goal and avoid undesirable results within 20 years; and 4) report the implementation activities to DWR to document whether progress towards the sustainability goal and the avoidance of undesirable results are being achieved.

Ultimately, five GSAs were formed to manage groundwater in the NASb, completing Step 1. Figure ES-1 shows the location of the Subbasin and the GSAs. This GSP and adoption by each GSA will complete Step 2. The GSP will be assessed every 5 years as additional information becomes available. Steps 3 and 4 will be implemented over the next 20 years.

The NASb is bounded by four adjacent subbasins. Figure ES-1 shows the location of the NASb along with the adjacent subbasin names and locations. The NASb is closely coordinating with these subbasins.

ES 2 – Agency Information

The five GSAs, by mutual agreement, selected the SGA GSA to be the Plan manager and lead agency for the preparation and implementation of the NASb GSP. The GSAs have entered into a Memorandum of Agreement (MOA) for the implementation of this GSP, which includes monitoring and reporting in the Subbasin along with projects and management actions.

ES 3 – Plan Area

The NASb encompasses about 342,000 acres in Sutter, Placer, and Sacramento counties and is bounded by the American, Bear, Feather, and Sacramento rivers. The Sierra Nevada foothills form the eastern boundary of the Subbasin. The NASb is about 40 percent urban, 30 percent farmland (mostly in Placer and Sutter counties), and less than 1 percent riparian vegetation. About 30 percent of the land is either native vegetation or fallowed farmland that could not be fully characterized. Most of the urban area is in Sacramento County and the southeastern portion of Placer County. Currently, the NASb has about 16,900 acres of habitat conservation preserves and easements, of which about 1,700 acres is riparian habitat. Figure ES-2 shows the general locations of these water use sectors.

Within the NASb, there are federal, state, county, and tribal agencies with land use jurisdiction. Within Placer and Sacramento counties, there are 20 water agencies, water districts, city/county water departments and water wholesalers that provide water to residents in the cities and towns. There are also over 40 small community water and non-community non-transient water systems, that are overseen by the counties and the state, whose water supply is from groundwater. Irrigation districts are also present that provide surface water for agriculture. Within many of the irrigation districts and cities are reclamation districts that are responsible for managing and maintaining the levees, freshwater channels, or sloughs, canals, pumps, and other flood protection structures in the area.

Surface water is available to most areas of the Subbasin and is supplemented with groundwater. There are about 3,800 water supply wells present in the Subbasin (about 2,600 domestic, 800 agricultural, 400 municipal and industrial wells).

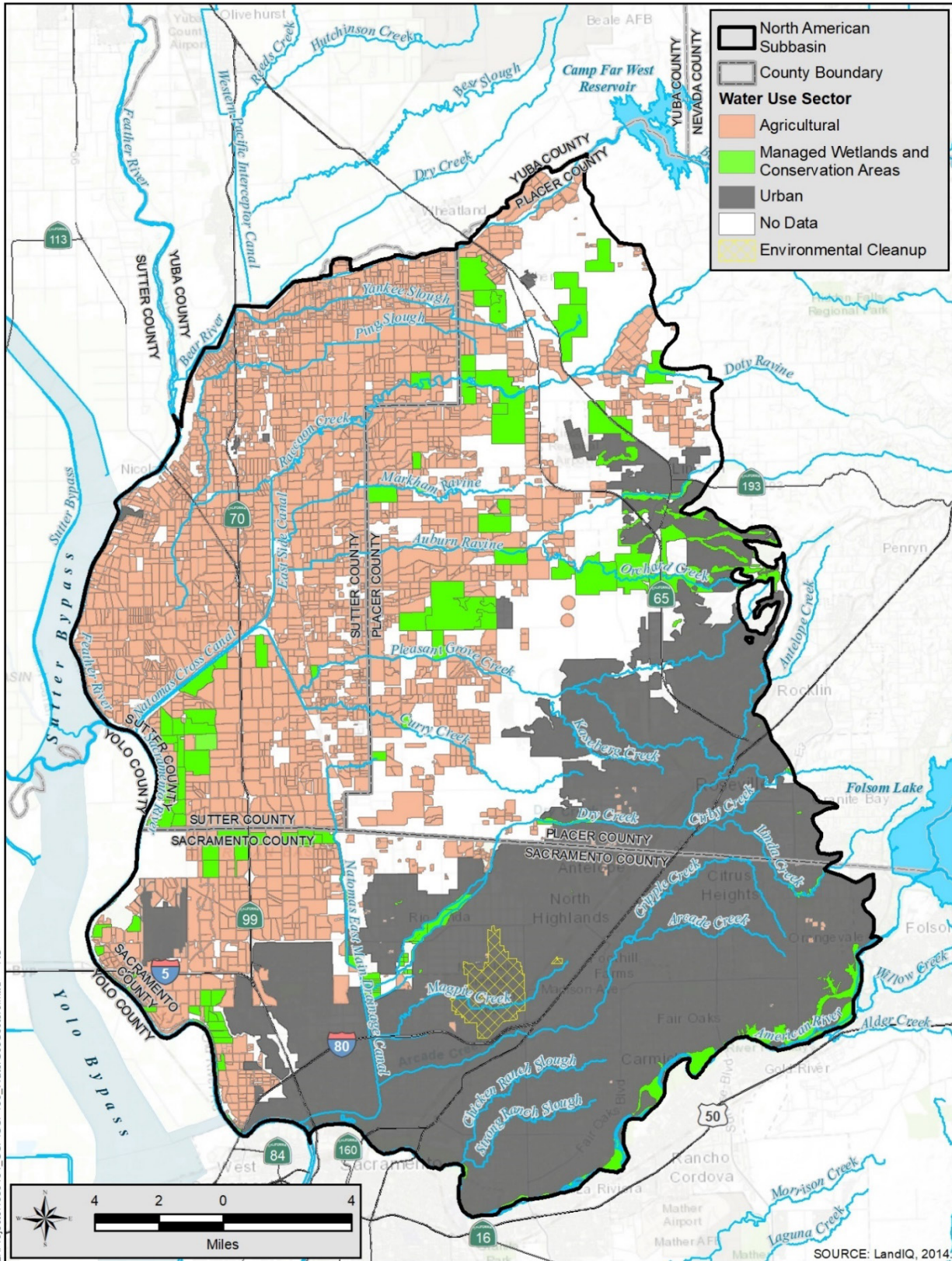


Figure ES-2. Water Use Sectors

ES 4 – Hydrogeologic Setting

The NASb is in the Sacramento Valley and is filled largely with sediments derived from the adjacent Sierra Nevada foothills, which contain fresh water. In general, these fresh-water bearing sediments beneath the NASb are thinnest to the east and thicken up to 2,000 feet to the west (see Figure ES-3). The sediments consist of alternating layers of clays, silts, sand and gravel. The sand and gravels layers into which wells are constructed are referred to as aquifers. These sand and gravel layers were deposited by meandering rivers and creeks, so they are not continuous across the entire Subbasin. Although the sediments are not present as continuous layers, they are interconnected. This was demonstrated by observing that groundwater levels in the various sand and gravel layers have similar levels and trends. Based on this information, the NASb is interpreted as having one principal aquifer.

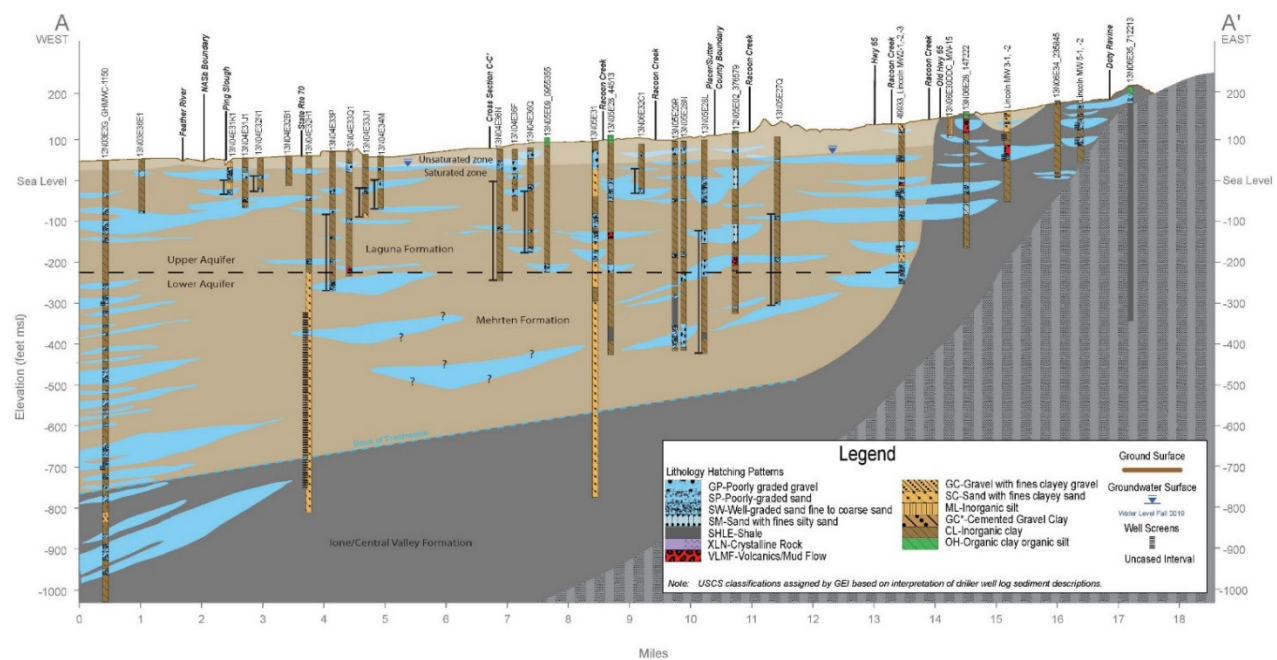


Figure ES-3. Geologic Section

Groundwater is recharged from throughout the surface of the Subbasin and from groundwater inflow from adjacent subbasins. No geologic sediments are impermeable, so some recharge occurs in all areas that are not covered by impermeable surfaces (such as asphalt or concrete). This is particularly important in agricultural areas where, even though there are low permeability soils, there are more than one hundred thousand acres of land that have applied or ponded water throughout the growing season, which results in large volumes of recharge to the Subbasin.

ES 5 – Groundwater Conditions

Groundwater levels in the western portion of the Subbasin are generally stable through time dating back to early in the 20th century. Groundwater levels in the central part of the Subbasin showed long-term declines in the north-central portion until the mid-1960s and in the south-central portion until the mid-1990s, when conjunctive use programs arrested these declines and allowed groundwater levels to begin to recover. Groundwater levels in the eastern portion of the subbasin have been generally stable since the 1970s, but they do show declines during dry periods with recovery during wet periods.

The groundwater contours show a pumping depression in the center of the Subbasin that is currently about 30 feet below mean sea level. Groundwater flows radially toward this depression, from the fringes of the Subbasin toward the center. The depression has been stabilized, with groundwater levels generally declining during dry periods and recovering during wet periods.

Limited land subsidence due to groundwater pumping was documented up to the early 1990s, but there were no documented impacts associated with the subsidence. Since then, the subsidence has been negligible.

Areas with surface water that is interconnected with groundwater were identified along portions of the American, Bear, Feather, and Sacramento rivers, along with creeks primarily in the western part of the Subbasin.

Potential groundwater dependent ecosystems (GDEs) identified in the natural communities commonly associated with groundwater dataset were evaluated using groundwater levels and the types of vegetation to classify them as *Likely*, *Less Likely* or *Unlikely* GDEs. Classifications of the species types and diversity of vegetation were used to further prioritize these areas. In many cases, GDEs were identified along canals and natural waterways that are used to convey surface water to agricultural users. In some cases, GDEs were identified in areas that could be supported by groundwater, but it appears their primary source of supply is groundwater pumped from wells.

Generally, the quality of groundwater in the Subbasin is suitable for nearly all uses, with the exception of contamination plumes and localized, naturally-occurring and human-caused quality issues, which may affect the supply, beneficial uses, and potential management of groundwater in the Subbasin if not properly managed. Total dissolved solids (TDS) and nitrate were identified as constituents that represent general conditions in the Subbasin, with some wells displaying upward trends. Nitrate is below the drinking water standards for all wells in the Subbasin. TDS exceeds the drinking water standards in some wells, predominantly in the western and eastern portions of the Subbasin. The higher salinity concentrations are generally considered to be present due to natural sources.

In the NASb, there are a few large groundwater contamination sites and multiple smaller sites that could affect supply and beneficial uses of groundwater in the Subbasin. The most significant

of these sites are the former McClellan Air Force Base (AFB) and the Aerojet Superfund Site (outside of the Subbasin). Cleanup activities, as overseen by U.S. Environmental Protection Agency, SWRCB, and the California Department of Toxic Substances Control, have been in progress for years and contaminants appear to be contained. SGA and interested water agencies meet with regulators on a quarterly basis to discuss the plumes' containment and how groundwater management activities may affect the remediation.

ES 6 – Water Budgets

Water budgets were created utilizing the Cosumnes-South American-North American (CoSANA) model, a fully integrated surface and groundwater numerical flow model that covers the entire NASb as well as the adjacent South American and the Cosumnes subbasins. CoSANA integrates the groundwater aquifer with the surface hydrologic system and land surface processes and operations. CoSANA was used to preform analyses of hydrogeologic conditions, agricultural and urban water demands, agricultural and urban water supplies and an evaluation of current and projected future regional conditions, including climate change, for the NASb. Because the model is integrated with the adjacent subbasins to the south, future projected conditions, along with climate change and projects, were assessed for the entire region.

The water budget for current conditions in the NASb showed the Subbasin has a current surplus of water, which was confirmed by groundwater levels rising in the central portions of the Subbasin. This surplus continues into the future, but in lesser amounts. The future conditions modeling included planned new developments, along with changes in agriculture and projected changes in water supply. When the future conditions were modeled with a central tendency climate change scenario, the Subbasin has an estimated future deficit of about 3,500 acre-feet per year. Table ES-1 shows the average annual estimated change in groundwater storage under each of these conditions.

Table ES-1. Estimated Groundwater Change in Storage

Model Baseline Condition	Average Annual Groundwater Storage Change (acre-feet)
Historical (water years 2009 through 2018)	31,900
Current (water years 1970 through 2019)	14,900
Projected Future Demands over 50 years (using 1970 through 2019 hydrology)	5,400
Projected Future Demands over 50 years with Climate Change (using 1970 through 2019 hydrology)	-3,500

ES 7 – Monitoring Networks

Groundwater levels and water quality are currently being monitored by the GSAs, local agencies, counties, DWR and federal entities in over 160 wells, not including those present near contamination sites. Representative monitoring wells were selected from this larger network that

are spatially distributed, actively being monitored, and have construction details to prove which portion of the aquifer they are monitoring. A total of 41 representative monitoring wells for groundwater levels (to monitor for chronic lowering of groundwater levels, reduction of storage, the potential for subsidence, and surface water depletion) were selected. The monitoring locations were developed to protect beneficial uses and users including, domestic well owners, GDEs and interconnected surface water.

Separate representative groundwater quality monitoring networks were developed. Sixteen shallow groundwater monitoring wells were selected to monitor water quality in the shallow portions of the aquifer in areas that are used by domestic well owners. The deeper portions of the aquifer, commonly used by public water systems, will be monitored by over 200 public supply wells that are required to monitor and report the analyses to state agencies.

There are instances of poorer water quality along the westerly and eastern edges of the Subbasin, so a separate sentry well monitoring network was developed to track the potential movement of these waters into the Subbasin. This sentry well network is not designated as being representative monitoring wells where minimum thresholds and measurable objectives would have been established.

ES 8 – Sustainable Management Criteria (SMC)

The NASb sustainability goal is to:

Manage groundwater resources sustainably for beneficial uses and users to support the lasting health of the Subbasin's community, economy, and environment. This will be achieved through:

- *The monitoring and management of established SMC;*
- *Continued expansion of conjunctive management of groundwater and surface water;*
- *Proactively working with local well permitting and land use planning agencies on effective groundwater policies and practices;*
- *Continued GSA coordination and stakeholder engagement; and*
- *Continued improvement of our understanding of the Subbasin.*

Undesirable results, minimum thresholds, and measurable objectives were developed for five of the six SGMA sustainability indicators: chronic lowering of groundwater levels, reduction of storage, land subsidence, degradation of water quality, and surface water depletion. Seawater intrusion has not occurred in the past and is unlikely to occur in the future and, therefore, sustainability criteria were not established for this sustainability indicator. As allowed under SGMA, the NASb uses groundwater elevations as a proxy for minimum thresholds and measurable objectives for its applicable sustainability indicators, with the exception of degradation of water quality. Undesirable results are summarized in Table ES-2 below.

Table ES-2. NASb Undesirable Results

Sustainability Indicator	Undesirable Result Definition
Chronic lowering of groundwater levels	<i>20% or more of all NASb representative monitoring sites have minimum threshold exceedances for 2 consecutive Fall measurements (8 out of 41 wells)</i>
Reduction of storage	<i>20% or more of all NASb representative monitoring sites have minimum threshold exceedances for 2 consecutive Fall measurements (8 out of 41 wells)</i>
Degraded groundwater quality	<p>For public water system wells</p> <ul style="list-style-type: none"> • <i>The basin wide average TDS concentrations of <u>all</u> public water system wells exceeds 400 mg/l</i> <p style="text-align: center;"><i>OR</i></p> <ul style="list-style-type: none"> • <i>The basin wide average nitrate (as N) concentration of <u>all</u> public water system wells exceeds 8 mg/l</i> <p>For the shallow aquifer (i.e. domestic and self-supplied) wells</p> <ul style="list-style-type: none"> • <i>25% of the representative monitoring sites' (RMS) TDS or nitrate (as N) concentrations exceed state maximum contaminant levels (MCLs)</i>
Land Subsidence	<i>The rate of inelastic subsidence exceeds 0.5 feet over a five-year period over an area covering approximately five or more square miles</i>
Depletion of surface water	<i>20% or more of the NASb interconnected surface water (ISW) representative monitoring sites (RMSs) have minimum threshold exceedances for 2 consecutive Fall measurements (5 out of 21)</i>

ES 9 – Projects and Management Actions

Because the water budget estimated that the Subbasin may be about 3,500 AFY in deficit with future demands and with climate change, the NASb evaluated a conjunctive use project that can resolve the deficit and has a net benefit of reducing groundwater pumping by 5,000 AFY. The project uses, for the most part, existing infrastructure, so project costs are minimal and are to be funded by the public water suppliers participating in the program.

A second planned project will make improve flood protection and habitat for aquatic species in the Natomas Cross Canal. As part of the continued water resources management of the NASb, six supplemental projects that are in the conceptual or planning level stages are also identified in the event projected conditions are worse than expected.

Five management actions are identified. The first management action is to continue development of the Sacramento Regional Water Bank, which will expand conjunctive use to further ensure basin sustainability. The second action is to explore potential revisions to Placer, Sacramento, and Sutter counties' and the City of Roseville's well permitting programs to assess whether the permitting ordinances can be improved to be more protective of domestic wells, GDEs and

interconnected surface water, along with reducing potential impacts to designated representative wells. The third action is to proactively coordinate with land use agencies on their development of plans and approvals of new developments, to improve communications with the agencies and inform them of findings of this GSP, annual report findings, and whether groundwater can be relied upon for future growth without causing undesirable results. The fourth action will improve data collection and communication with domestic and other shallow well owners to protect these beneficial users of groundwater in the NASb. The fifth action will continue monitoring and assessment of the NASb's GDEs to better understand these ecosystems to help protect them.

ES 10 – Plan Implementation

The NASb GSAs estimate a budget of \$1.15 million over the next five years for monitoring, reporting, GSP assessment and update, data management, coordination, outreach, and management actions. The budget also includes a 20 percent contingency for unanticipated expenses. The GSAs have also identified a funding plan in an MOA for GSP implementation. The budget does not include estimates of the costs for conjunctive use or development of the Sacramento Regional Water Bank, which already have funding through individual participating agencies. The budget also does not include the value of the in-kind time being provided by the participating GSAs.

The GSP identifies 28 specific implementation actions with associated schedules, where applicable. These actions are organized into the following categories: monitoring; data management; data analysis; coordination and outreach; and other management activities.

ES 11 – Notice and Communications

The GSAs reached out to the public by developing a website (nasbgroundwater.org) and a list of more than 300 interested parties. The GSAs sought input from small community water systems by notifying them through direct mailer post cards. The GSAs developed informational materials and held over 40 public meetings (both at board and city councils and monthly technical committee meetings) and four NASb-wide public workshops.

The public had opportunities to comment directly on this GSP during releases of draft chapters, through workshops and on the Public Draft GSP. If a comment was specific to an individual section of the GSP, the GSP text was revised. General comments that raised substantial technical or policy issues may have resulted in changes to multiple GSP sections. Comments that were general in nature or that did not raise substantial issues were noted, but no changes were made. The GSAs plan to continue public outreach and stakeholder engagement through the GSP implementation phase through various activities, including an annual public meeting to release the results of the Annual Report and the status of projects and management actions.

1. Introduction

In 2014, the Sustainable Groundwater Management Act (SGMA) was signed by the Governor of the state of California, setting the framework for local agencies to sustainably manage California's groundwater basins. To avoid potential State intervention, SGMA requires groundwater basins/subbasins designated by the California Department of Water Resources (DWR) as medium- or high-priority to follow four basic steps: 1) form a Groundwater Sustainability Agency (GSA); 2) develop and adopt a Groundwater Sustainability Plan (GSP or Plan); 3) implement the Plan to achieve a sustainability goal and avoid undesirable results within 20 years; and 4) report the implementation activities to the DWR to document whether the sustainability goal and the avoidance of undesirable results is being achieved. Ultimately, five GSAs were formed to manage groundwater in the North American Subbasin (NASb or Subbasin), completing Step 1. This GSP and adoption by each GSA will complete Step 2. This GSP will be assessed every 5 years, with amendments as needed to ensure the Plan is meeting its sustainability goal.

This GSP is a framework to provide for the sustainability of the NASb of the Sacramento Valley Groundwater Basin for the next 20 years. The NASb, designated as subbasin No. 5-021.64 by the DWR, is bounded on the north by the Bear River, on the south by the American River, to the west by the Feather and Sacramento rivers, and on the east by the Sierra Nevada foothills (*see Figure 1-1*). The NASb was designated by DWR as a high priority subbasin and therefore the formation of GSAs and the completion of a GSP is required to avoid potential State Water Resources Control Board (SWRCB) intervention. Surrounding subbasins were also designated as medium- or high-priority and are required to comply with SGMA. Groundwater is a critical resource to the Subbasin's community, economy, and environment by providing an average of 280,000 acre-feet per year (AFY) for public and agricultural supply or just under 50 percent of total water supply.

Agencies in the NASb have been actively managing groundwater for decades and have achieved positive groundwater management results. Groundwater levels within the Subbasin have been relatively stable for decades and have shown the ability to recover after periods of prolonged pumping and droughts. The passage of SGMA created an opportunity for a cooperative endeavor to develop a single GSP for the entire NASb. Beginning in January 2017, representatives of local agencies began coordination meetings that ultimately led to agreement to form five GSAs to cover the entirety of the Subbasin, while ensuring broad representation of the various stakeholder interests throughout the parts of the three counties comprising the NASb.

This GSP is organized into the following sections:

Section 1 – Introduction – Provides an overview of SGMA and associated requirements and introduces the contents of the Plan.

Section 2 – Agency Information – Provides a description of each GSA, contact information, implementation authority, and estimated costs for Plan implementation.

Section 3 – Plan Area – Describes the geography, historical and projected land uses, jurisdictional areas, water use sectors and water sources, existing water resources management plans, existing monitoring networks, and conjunctive use programs. The section also assesses the potential effects of implementing the Plan on water supplies.

Section 4 – Basin Setting – Describes the geologic conditions that control how groundwater moves in the Subbasin, recharge and discharge areas, general water quality, and principal aquifers.

Section 5 – Groundwater Conditions – Describes historical and current groundwater levels, changes in groundwater storage, water quality, subsidence, change in storage, and identification of interconnected surface water and groundwater dependent ecosystems.

Section 6 – Water Budgets – Provides a historical water budget and forecasts future groundwater use for the next 50-years to assess whether groundwater conditions will remain sustainable including the influence of climate change.

Section 7 – Monitoring Networks – Describes the monitoring networks to be used to assess sustainability indicators and monitoring protocols. Establishes an annual reporting mechanism to assess the management performance and for 5-year assessments of this GSP to maintain the Subbasin’s sustainability.

Section 8 – Sustainable Management Criteria – Describes locally defined sustainability goals and undesirable results for the SGMA groundwater sustainability indicators. Establishes management criteria, the operating range in which groundwater levels will be maintained, in the form of minimum thresholds and measurable objectives.

Section 9 – Projects and Management Actions – Identifies current, planned, and supplemental projects and management actions to maintain groundwater sustainability.

Section 10 – Plan Implementation – Provides an overview of how the GSAs will regularly perform the activities needed to manage the Subbasin.

Section 11 – Notice and Communications – Provides a summary of GSA activities with interested parties.

Section 12 – References – List of materials used to develop this Plan.

This Plan was developed cooperatively by the GSAs in the NASb along with input from stakeholders and in coordination with the adjacent South Yuba, Sutter, Yolo, and South American subbasins.

